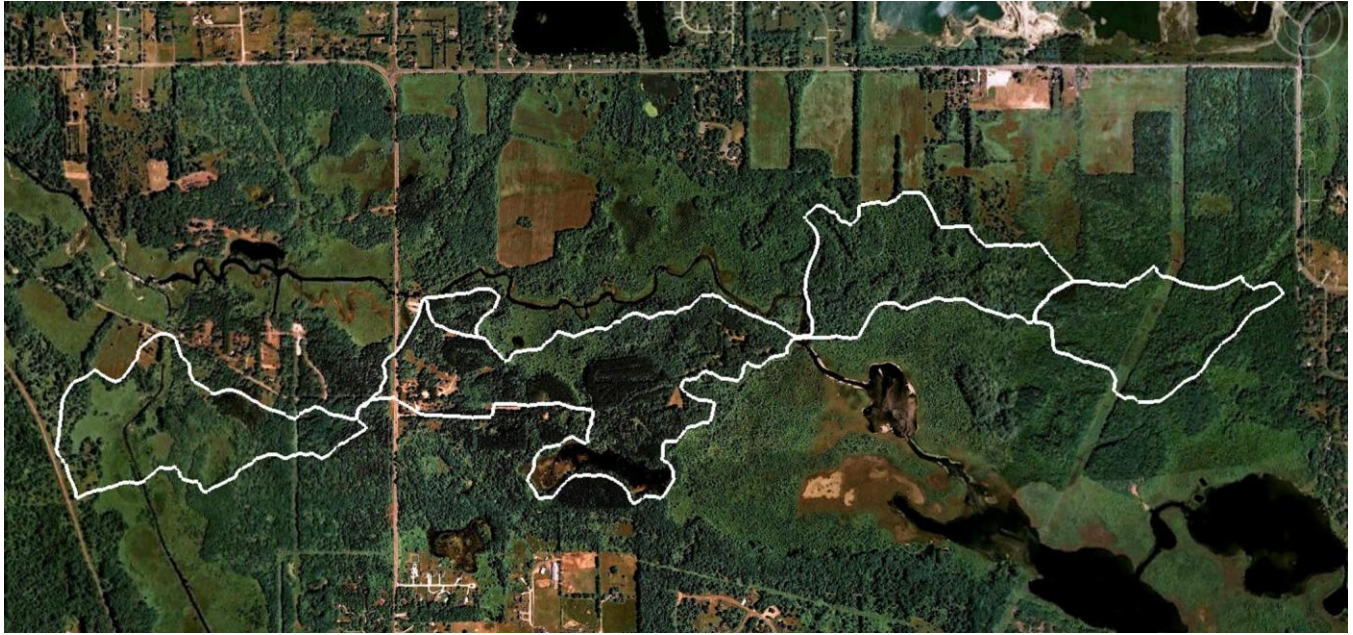


Winter Trek Guide



Chief Pontiac Trail Credential Hikes

WP#	Dist. Feet	Accum. Miles	Dist. Meters	Accum. Meters
1	0	0.0	0	0
2	1,220	0.2	372	372
3	420	0.3	128	500
4	3,609	1.0	1,100	1,600
5	1,706	1.3	520	2,120
6	1,804	1.7	550	2,670
7	689	1.8	210	2,880
8	443	1.9	135	3,015
9	2,001	2.3	610	3,625
10	738	2.4	225	3,850
10A	2,904	2.9	885	4,735
11	1,952	3.3	595	5,330
12	476	3.4	145	5,475
13	1,657	3.7	505	5,980
14	722	3.9	220	6,200
15	4,183	4.6	1,275	7,475
16	1,640	5.0	500	7,975
17	2,051	5.3	625	8,600
18	1,969	5.7	600	9,200
19	492	5.8	150	9,350
20	591	5.9	180	9,530
20A	984	6.1	300	9,830
20B	656	6.2	200	10,030
21	1,066	6.4	325	10,355
22	180	6.5	55	10,410
22A	853	6.6	260	10,670
23	1,640	6.9	500	11,170
24	328	7.0	100	11,270
24A	459	7.1	140	11,410
25	820	7.2	250	11,660
26	640	7.4	195	11,855
27	2,395	7.8	730	12,585
28	525	7.9	160	12,745
29	2,280	8.4	695	13,440
29A	328	8.4	100	13,540
30	1,608	8.7	490	14,030

Hiking Is A Personal Choice and Requires Personal Responsibility

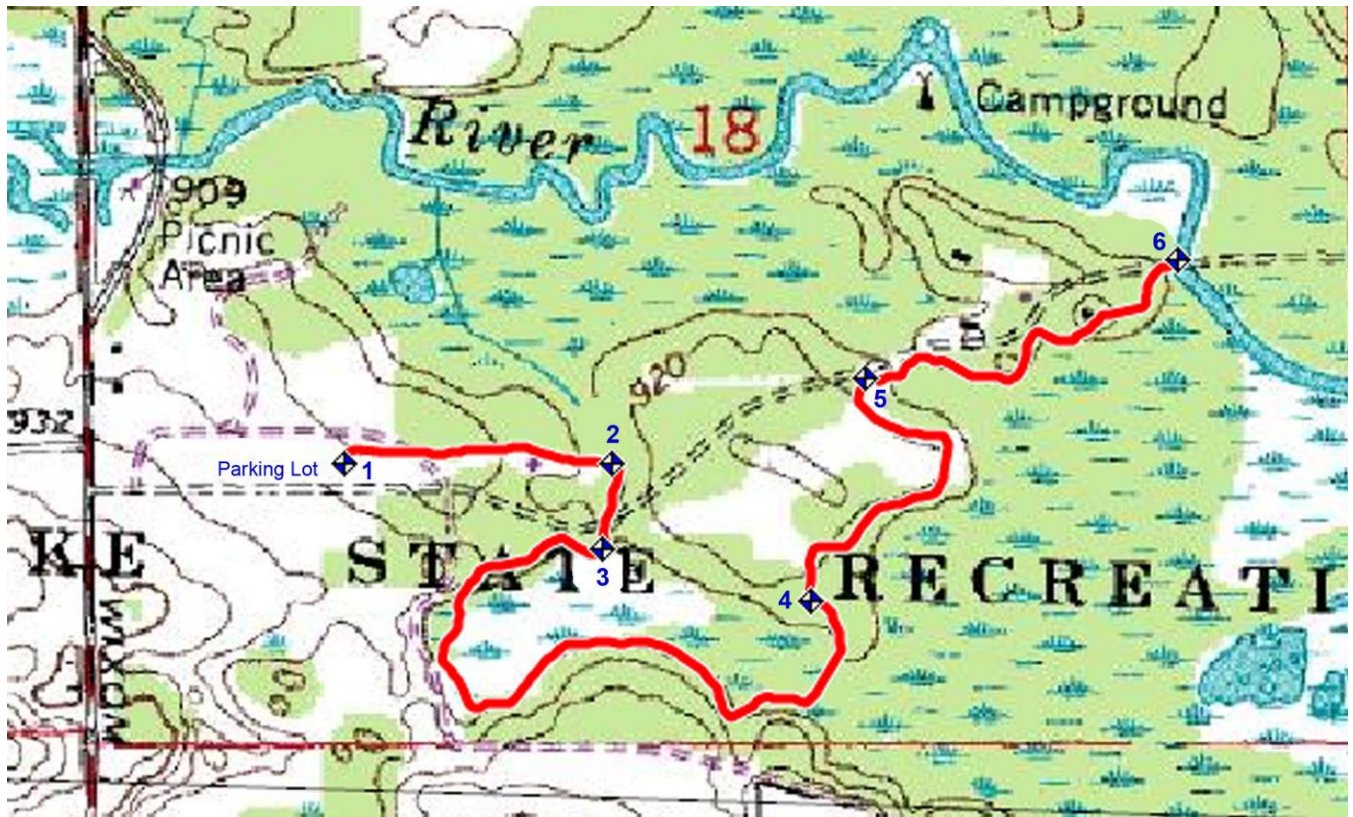
Hiking, backpacking, canoeing, and other associated CPT trail activities are dangerous and can result in injury and/or death. These activities expose you to risks. Risks are mitigated, but NOT eliminated by training or skill. The BSA/GLC/ CPP assumes absolutely no responsibility, including but not limited to injury or loss due to the use of information, or participating in activities found within this guide.

Disclaimer and Restriction of Liability

The BSA/GLC/ CPP provides this guide as a free service. While we're satisfied that this guide is dependable in the majority of cases at the time of publication, this guide may not reflect current ground conditions. Please use this guide as such and not as definitive information. All such information is provided "as is" without warranty of any kind. We make no claims, promises or guarantees about the overall accuracy, completeness, or adequacy of the contents of this guide and expressly any and all liability for bodily injury and property damage associated with the use of this guide. In no event shall the BSA/GLC/ CPP be liable for any special, direct, indirect, consequential or incidental damages or injury. No responsibility is assumed for damages or other liabilities due to the accuracy, availability, use or misuse of the information herein provided.

About The Maps

The trail data points were collected using a Lowrance H₂O-C handheld GPS with an attached Gilsson amplified external antenna. Topographical trail maps were produced using ExpertGPS by TopoGrafix. The guide was finally composed using Adobe Photoshop, MS Word, and Adobe Acrobat.

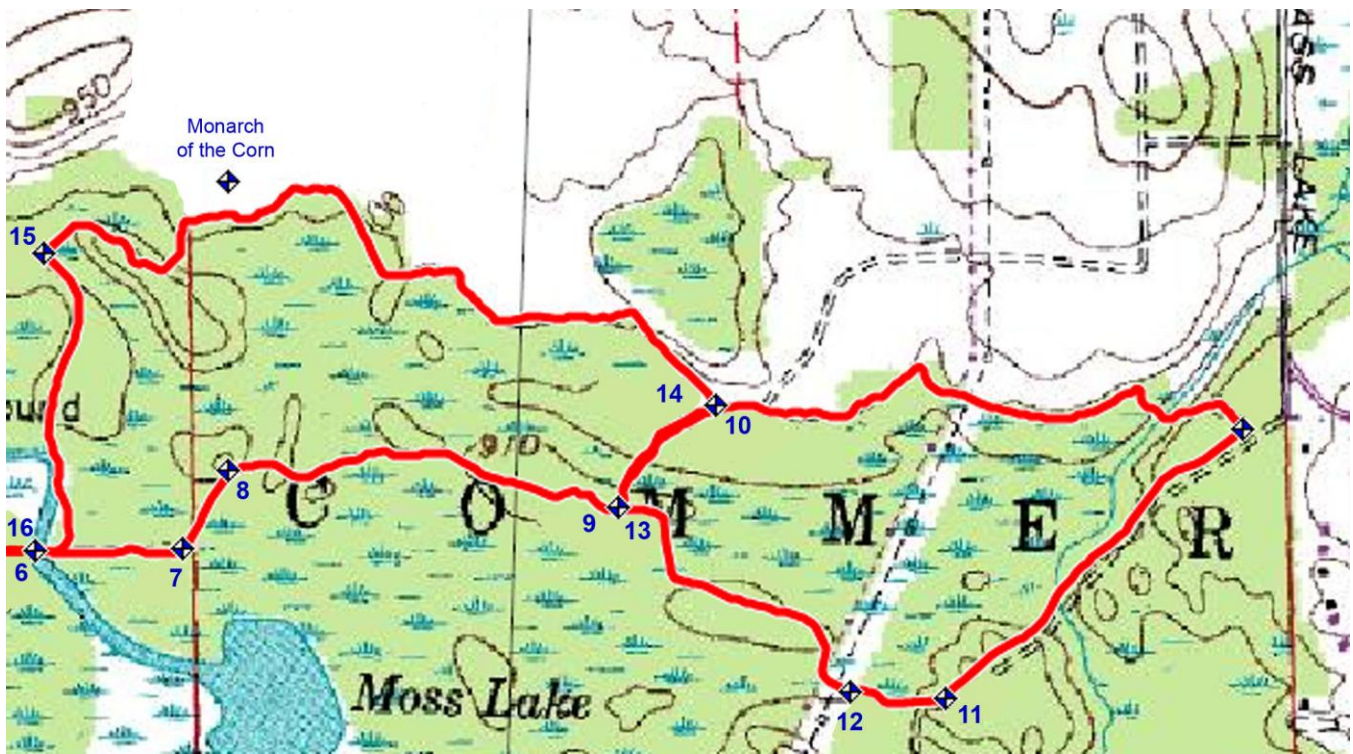


CPT Winter Trek 1st day

Parking Lot to Marsh Trail to Moss Lake Dam

(Winter Map #1)

1. E – Your trek begins in the “Trailhead Parking” parking lot. Head east through the parking lot and around the gate in the northeast corner. Continue east (400m) past the Annex Building to the second marked intersection.
2. S – At this intersection turn onto the trail heading south to the marsh trail. Cross the access road and proceed (125m) to the nature trail that goes around the marsh.
3. W – Follow the Marsh Trail (1.1km) to the southwest so that you are skirting the marsh in a counter-clockwise direction. Please stop for a moment on the boardwalk at the west end of the marsh to reflect on the nature that is before you and to set the tone for the coming day's experiences.
4. N – Shortly after rounding the eastern edge of the marsh and now heading west, turn to go north at the three-way intersection instead of completing the Marsh Trail loop. Take this path north (510m) until you come to a very large clearing.
5. NE – As you pass the clearing, turn northeast onto the short trail leading down to the ski trail. A short distance (10m) before the access road turn east between two red oak trees and onto the ski trail. Continue east (540m) on the winding trail towards the Moss Lake Dam. When you reach the dam (#6) this is a good place for a short break to adjust packs/sleds and use the latrines. This is also a good place for lunch and hot chocolate.
 Note: If you are ever hiking on the road, you missed the turn. Go back and proceed onto the ski trail.

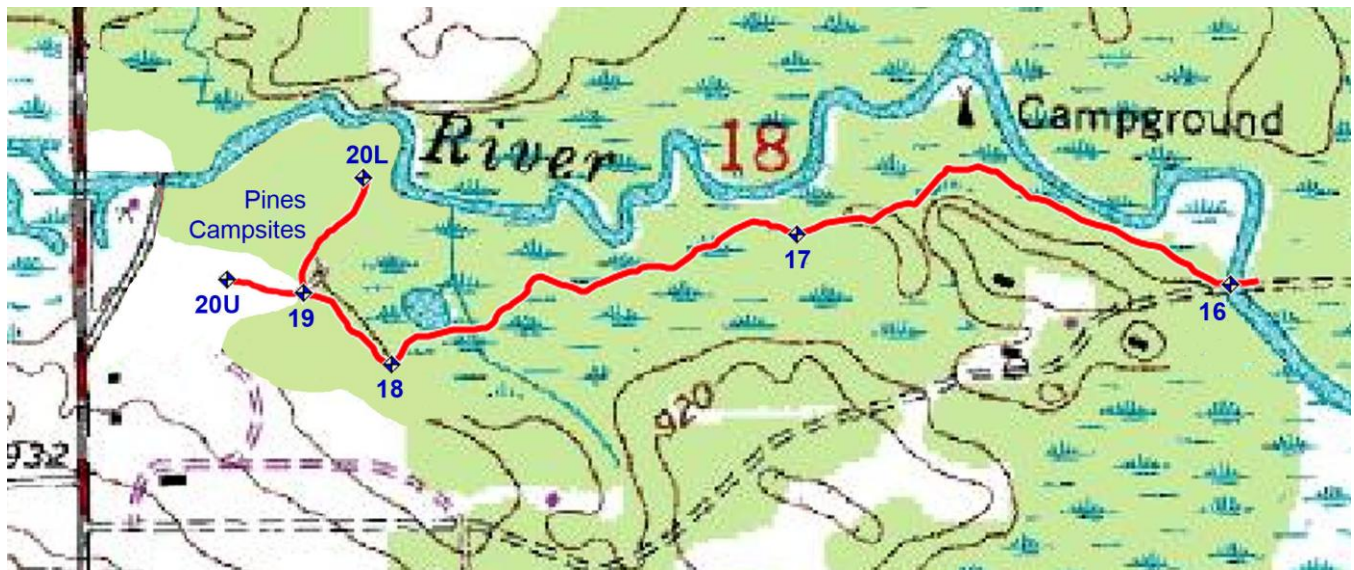


CPT Winter Trek 1st day

Moss Lake Dam to Moss Lake Dam Figure-Eight Loop

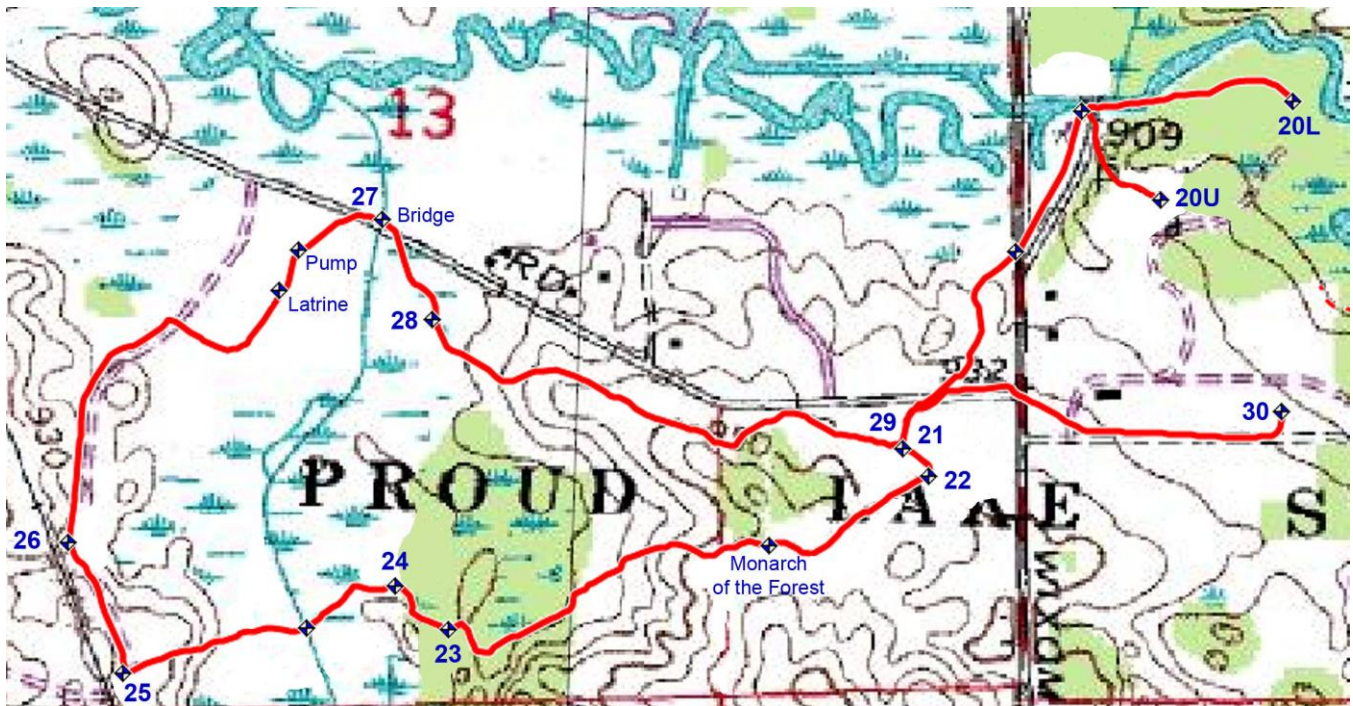
(Winter Map #2)

6. E – Starting from Moss Lake Dam follow the hiking trails as shown above to form two intersecting loops (an approximate figure-eight shape). From the dam head east (230m) to the second marked intersection.
7. NE – Turn and head northeast (140m) to the next intersection.
8. E – Turn east and proceed (600m) to the next intersection.
9. NE – Turn and head northeast (220m) to the next intersection.
10. E – Turn east and head (920m) to the boat launch access road. Turn onto the road and head southwest (600m).
11. W – Where the road makes a sharp turn to the south, you continue heading west into the woods. Hike through the woods (150m) west to the next intersection near the far edge of the woods.
12. NW – Head northwest and pass under the power lines. Continue northwest into the woods and proceed to the next intersection (530m).
13. NE – Turn and head northeast (220m) to the next intersection.
14. NW – This time at this intersection turn and head northwest (1.3km) to the next intersection.
15. S – Turn south and proceed (520m) back to the dam (#16).



CPT Winter Trek 1st day, Moss Lake Dam to Pines Campsites (Winter Map #3)

- 16. NW – Immediately after crossing back over the dam, you take the trail leading to the northwest (600m). This portion of the trail runs parallel to the Huron River.**
- 17. W – Continue west and proceed (600m) to the next intersection. Along the way you will be going over several boardwalks. Caution: These boardwalks are very uneven in spots and can be very hazardous. Be careful!**
- 18. NW – Head northwest (150m) and uphill to the access road.**
- 19. W/N – Your day's hike will end when you reach the Pines Organizational Campsite. You may camp at either the upper (20U) or lower (20L) campsite. There are latrines at both sites, but the lower campsite has a partially enclosed pavilion.**



CPT Winter Trek 2nd day Pines Organizational Campsite to Parking Lot (Winter Map #4)

20. W – This day's trek begins by following the trail west through the woods along the river out to a picnic area parking lot (300m). Follow the trail southwest out the driveway and across Wixom Road. Here you will see one of the old metal arrowhead signs showing the entrance to the trail (200m). Turn south and follow the trail across Garden Road (325m).
21. SE – Turn and head southeast for a short distance to the next intersection (55m).
22. SW – Turn and proceed southwest. In a while (260m) you will come to a large old tree that has been named "Monarch of the Forest". Continue on this path until it ends into an equestrian trail crossing (500m).
23. NW – Turn northwest and hike to an intersection with another one of the old metal arrowhead signs (100m).
24. W – Take the trail west out to The Russell Bridge (140m). Continue on west (250m) to the railroad crossing.
25. N – Just before the crossing turn and head north. Proceed to the fifth utility pole north of the crossing (200m).
26. NNE – At the split, veer to the north-northeast and continue up this trail (350m) until you enter a large meadow. Turn southeast and follow its perimeter around to the picnic area. Here you will find a latrine and tables. Continue northeast and across the second bridge over Norton Creek (380m).
27. SE – Immediately past the bridge take the horse trail southeast to the next intersection (160m).
28. SE – Turn southeast and head to the next intersection (700m).
29. N – Turn north and head out to Garden Road (100m). Turn east and cross Wixom Road. Continue east and return to the parking lot (500m) using the north side of the access road to conclude your CPT Winter Trek.

Congratulations! You have walked in Chief Pontiac Steps!

Please return the map you were given at the beginning to your trail guide along with your 250 word trail experience reports and hand drawn map sketches, within six weeks of completing your trek.